

# Bannerman Infield Chalker



**Model No.: B-LC-1234**

(Updated: 25-MAY-10)

Dear Owner,

Welcome to Bannerman, the Home of Sports Turf Magic.

Your new B-LC-1234 Infield Chalker is designed to meet, and exceed your infield lining requirements. The ease of operation and low maintenance will give you many trouble free hours of operation. Please make certain that you read and understand the important instructions for the assembly, adjustments, operations, safety and the maintenance contained in this manual. If there are any instructions which you do not fully understand, contact your dealer or Bannerman Ltd. for clarification prior to using the unit.

When in need of replacement parts, specify the model and serial number of your B-LC-1234 Infield Chalker. The serial plate that identifies your model number and the serial number is located between the rear wheels on the bottom chassis. To give you many years of service, regular preventative maintenance is required. Should you require further assistance, please feel free to contact your local Bannerman dealer, or Bannerman directly at:

Bannerman Ltd.  
41 Kelfield Street ~ Rexdale, ON M9W 5A3  
Tel # 416-247-7875 ~ Fax # 416-247-6540  
CDN 1-800-325-4871 ~ USA 1-800-665-2696  
Email: [info@sportsturfmagic.com](mailto:info@sportsturfmagic.com)  
Website: [www.sportsturfmagic.com](http://www.sportsturfmagic.com)

## **Work Safely – Follow these Rules!!**

A careful operator is the best insurance against an accident!!

1. Do not wear loose fitting clothing that may catch in moving parts.
2. Use extreme care when making adjustments.
3. Always use proper tools or equipment for the job at hand.
4. Before and during operation the area should be checked to assure that the area is clear of obstacles, hazards and personnel.
5. Extreme caution should be exercised when operating close to ditches, fences or on hill sides.
6. Hands, feet, clothing and other objects must be kept away from all moving parts.
7. Always read the operating instructions carefully and understand the controls before commencing work.
8. Safety guards are supplied for your protection. Use them and make sure they are correctly in position.
9. Before starting work always visually check machines for damage or wear to working parts.
10. Do not allow any unauthorized person to handle machines in any way at anytime.

# Warranty Statement

Bannerman Ltd. warrants all Bannerman B-LC-1234 Infield Chalkers that have been registered in our system. By receiving the Warranty Card & Declaration or Delivery Card completely filled out, via post, fax, or email within 15 days of Date of Sale for Registration, or Warranty is Null & Void. Some dealers or distributors may do this on behalf of their customers, but it is the responsibility of the end user to make sure that the Warranty Card has been filled out and submitted to Bannerman Ltd.

Warranty Cards are included in the package with this booklet, and are also able to be filled in and printed off of our website: [www.sportsturfmagic.com](http://www.sportsturfmagic.com).

Bannerman B-LC-1234 Infield Chalkers are covered by warranty when used properly, to be free from defects in material workmanship under normal use and service, for a period of 90 days. This warranty does not guarantee a particular service life of the product. Service life will vary with application, operating environment, level of maintenance and other factors beyond our control.

Bannerman's sole responsibility for the B-LC-1234 Infield Chalkers or parts determined to be defective and covered by this warranty, is limited to repairing, or replacing the product or part.

Prior authorization from Bannerman Ltd. must be obtained, before replacing or returning parts), or incurring any cost for labor. No charges for expense incurred in parts, labor or transportation, by unauthorized persons will be allowed under this warranty. Bannerman Ltd, reserves the right to request the return of any part or assembly (with transportation charges prepaid) claimed to be covered under this warranty.

Bannerman Ltd. shall not be liable, in event, for proximate, incidental, consequential, special or other damages, including, but not limited to, damages for loss of production, loss of profit, loss of opportunity, or injury to persons or property arising out of any breach of this warranty.

There are no warranties, expressed or implied, including the warranty of the merchantability, warranty, warranty of fitness for particular purpose, or any other warranty extending beyond that set forth above.

# Operating Instructions

We want you to obtain the best performance from this implement. If you have any difficulty in carrying out the following instructions please contact us or your local representative or dealer.

Operating Principle; as the chalker is pushed forward the marking material is carried forward from the bottom of the hopper, by a reciprocating plate (Item #10), through a variable front opening aperture, and is discharged into a chute outlet of adjustable widths.

## Operating the Infield Chalker

1. Adjust the position of the handle to suit the operator's height.
2. Remove the hopper cover, fill the hopper, and replace the hopper cover.
3. To adjust the rate of material dropping to the turf, first set the opening of the flow plate (Item #5) by relocating the hook end of the cable to the next hole in the cable bar link (Item #23). These holes affect the flow plate opening in  $\frac{1}{4}$  inch increments.
4. To set the desired width of line; gently pull back on the adjustment lever (Item #9) and move lever to the correct hole. The hole at the top of the index plate will open the shutters to a 1 inch width, 2<sup>nd</sup> hole is a 2 inch width, 3<sup>rd</sup> hole is a 3 inch width, and the 4<sup>th</sup> hole is a four inch width.
5. When all adjustments have been made, push the chalker forward at a steady walking pace. The handle on the cover provides a visual means of following the correct line.

To transport the marker over short distances, tilt the handle down at the back until the drive wheels are clear of the ground, and push the marker forward on the rear wheels.

When transporting over a long distance, unlock the hand knobs (item #29) and wind the knob clockwise onto the shaft until the striker bar (item #13) clears the cams allowing the front wheels to freewheel. On site, unwind the hand wheel again to engage the cams.

# Maintenance

During use always keep the hopper cover in place; preventing the chalking material from becoming damp. After use always empty the chalking material from the hopper. Push the chalker forward to clear the bottom plate and outlet of chalking material.

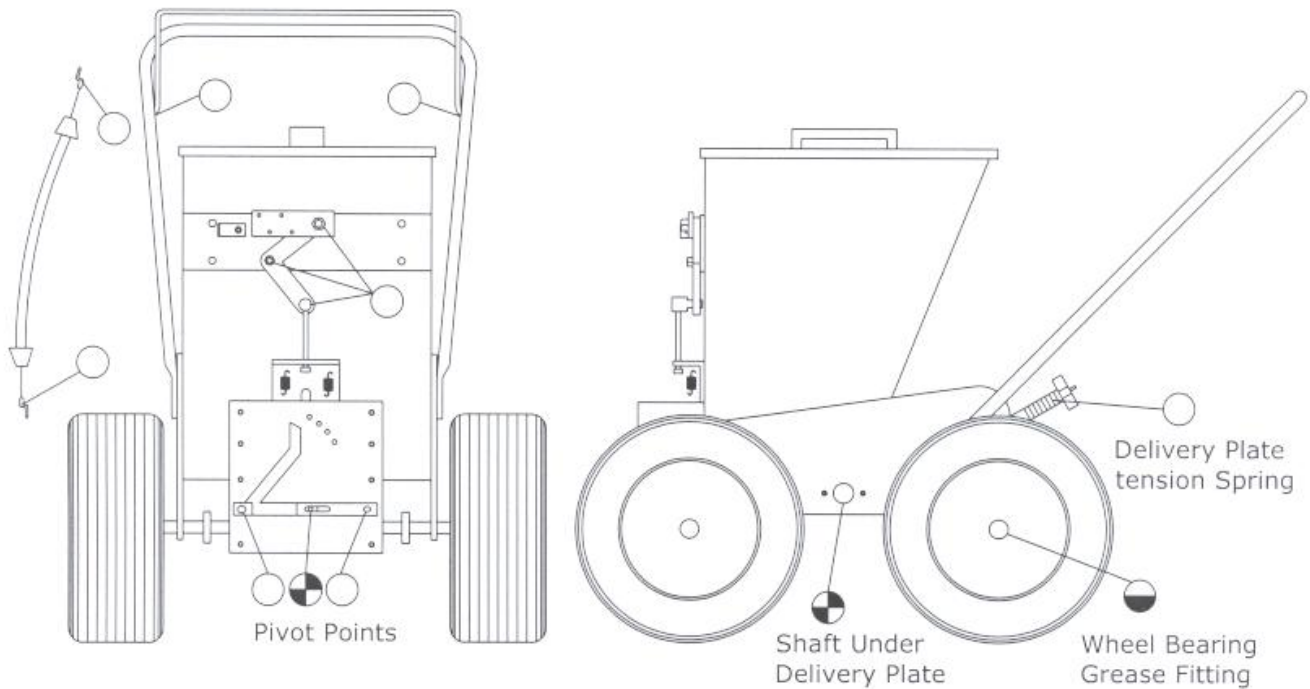
The necessity of thoroughly cleaning the implement after use cannot be overstressed, if delays and frustration are to be avoided.

When the chalker is cleaned, lubricate all the points as show on the diagram.

## LUBRICATION CHART

### KEY~

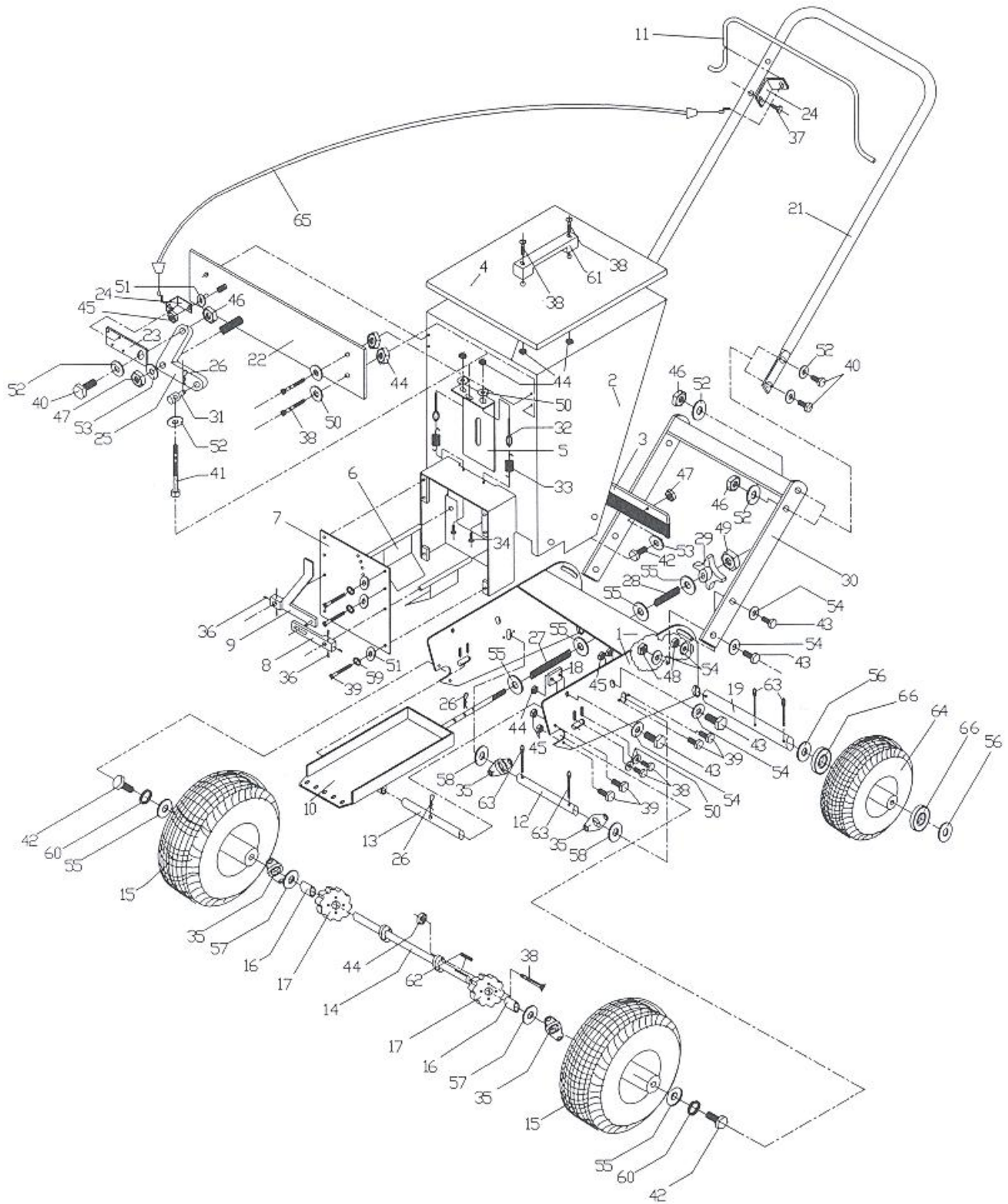
- Grease Regularly
- ◐ Grease Periodically
- Oil Periodically



# Bannerman Infield Chalker

Model No.: B-LC-1234

Year: 2010



## B-LC-1234 Infield Chalker

ITEM #	PART NUMBER	DESCRIPTION	QTY.
1	01201	Chassis	1
2	01202	Hopper	1
3	01203	Strip, Brush	1
4	01204	Lid	1
5	01205	Flow plate	1
6	01206	Shutters	2
7	01207	Index Plate	1
8	01208	Connecting Link	1
9	01209	Adjustment Lever	1
10	01210	Delivery Plate	1
11	01211	Handle, Bail	1
12	01212	ROLLING SHAFT	1
13	01213	STRIKER ROD	1
14	01214	CAM DRIVE SHAFT	1
15	01215	WHEELS - DRIVE	2
16	01216	SPACER - FRONT WHEEL	2
17	01217	CAM	2
18	01218	BLOCK - RUBBING	2
19	01219	AXLE - REAR	1
20	01220		
21	01221	UPPER HANDLE	1
22	01222	PLATE - LEVER & CABLE	1
23	01223	CABLE LINK BAR	1
24	01226	BRACKET - CABLE	2
25	01225	LEVER-90° PIVOT	1
26	08174	PIN-HITCH	1
27	01227	SPRING - COMPRESSION 4 1/2"	1
28	01228	SPRING - LIGHT COMPRESSION	1
29	01229	KNOB-HAND	1
30	01224	HANDLE - LOWER	1
31	01231	5/16-18 SWIVEL	1
32	01232	BOLT - 10-24 EYE	2
33	01233	EXTENTION SPRING	2
34	01234	CLEVIS - PIN 1/4X1/2	2
35	01235	BEARING - CAM & ROLLER	4
36	01239	SET SCREW - 1/4-20X1/4	6
37	11232	10-16X5/8 SELF TAPPING SCREW	1
38	03002	BOLT - 10-24X1/2	18
39	03013	BOLT - 1/4-20X3/4	16
40	02002	BOLT - 5/16-18X1	5
41	03053	BOLT - 5/16-18X2.75	1
42	03026	BOLT - 3/8-16X1.5	4

43	00537	BOLT - 7/16-14X1.5	8
44	02048	NYLOCK - 10-24	20
45	02066	NYLOCK - 1/4-20	9
46	02004	NYLOCK - 5/16-18	5
47	03022	NYLOCK - 3/8-16	3
48	15047	NYLOCK - 7/16-14	8
49	03073	JAM NUT - 1/2-13	1
50	01237	FLAT WASHER - #10	10
51	03007	FLAT WASHER - 1/4	7
52	02005	FLAT WASHER - 5/16	9
53	02024	FLAT WASHER - 3/8	3
54	09016	FLAT WASHER - 7/16	12
55	03032	FLAT WASHER - 1/2	6
56	04037	FLAT WASHER - 5/8	4
57	06037	FLAT WASHER - 3/4	2
58	08034	SHIM WASHER - 3/4	2
59	02056	LOCK WASHER - 1/4	6
60	03049	LOCK WASHER - 3/8	2
61	14118	GRAB HANDLE	1
62	03045	KEY - 3/16X3/16X1.25	1
63	00811	COTTER PIN	6
64	01236	REAR WHEEL	2
65	01911	CABLE	1
66	04041	BEARING - 5/8" WHEEL	4
67	01238	SCREW - FLATHEAD 10/24x1	8